

# E-LOK


## Smart Keysafe



## User Manual

### First Steps:

Before closing the Keysafe, place 3x AAA 1.5v Alkaline Batteries into the battery pack. **\*Only Use Alkaline\***. The battery pack is opened by undoing the 4 screws on top (circled in green).

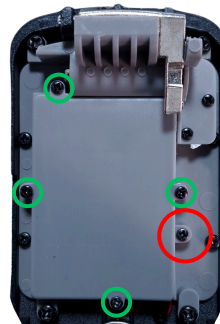
It is important to install batteries before closing the hatch of the Keysafe, this is so you can put the default code in to unlock it again. The default code is **123456** 

After installing batteries, please follow instructions on the next page to install/setup your Keysafe.

### Factory Reset:

Find the Reset button screw (circled in red) on the control panel of the E-LOK Keysafe. Remove the screw with the included screwdriver, and underneath will lie the Reset button.

With something like a paperclip end, click and hold the button, until you hear a beep sequence which will tell you it is reset.

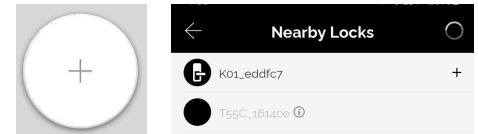


### Connecting to Keysafe:

First, download the E-LOK App, and create an account.

Ensure bluetooth is activated on your phone, you are within 2- meters of the Keysafe, and the Keysafe has power going to it.

Click the plus sign on the home page of the E-LOK App, then click any number key on the Keysafe.



Click next on the E-LOK App, then the Keysafe should appear in bold under nearby locks. Tap + to pair.

### USB-C Port:

There is a USB-C Emergency Power Port below the keypad on the face of the Keysafe. This can be used to provide power to the Keysafe when batteries are flat, so you can unlock it and gain access to the battery pack.

### Bluetooth Unlock:

To Unlock Via Bluetooth, use the Padlock button on the home page of the E-LOK App.


You can tap to unlock it, and hold to lock it.

**Note:** Due to the hatch being spring loaded, upon unlocking it will automatically open. However when the mechanism locks, even though it will be "locked", it still needs to be manually closed for it to be secure.

### Passcode Setup:

To set a passcode, go to the Passcodes tab on the E-LOK App.

You can set many different types of passcodes including timed and permanent.

To unlock the E-LOK with a passcode, enter the pin and then click the  sign.

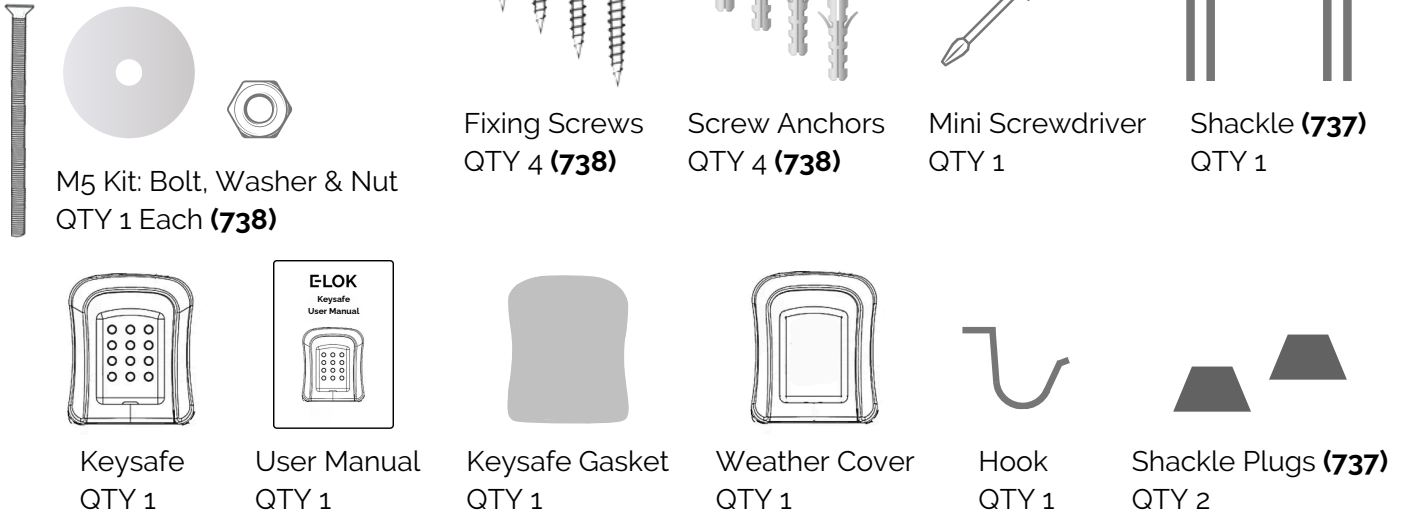
### Auto Lock:

The Keysafe comes with Auto-Lock on as default, set to 1 second.

We recommend keeping this set to 1 second, because if the mechanism is not locked, the Keysafe hatch can not be shut.

With Auto Lock set to 1 second, when you shut the Keysafe again after you've unlocked it and got what you need out of it, it will latch straight away, and be secure.

# Packing List:

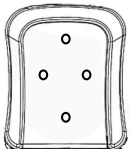


## Installation (738):

**1.** Choose the fixings depending on place of install. For a door, you will need the M5 Kit, Fixing Screws & Screw Anchors. For a wall, you will only need the Fixing Screws & Screw Anchors. The tools you need, are a drill with a 5mm drill bit, a screw driver, and marker pen.

**2.** If you are using the cover, place it on now and drill through the 4 fixing holes in the Keysafe (Fig.1). Drill right through the cover. **Please Note:** IP54 Rating applies only when Weather Cover is used.

Fig.1



**3.** Next, choose a place for the Keysafe to be installed. Hold it up to the surface you're installing it on and mark out the 4 pilot holes. (Fig.1)

**4.** Drill the 4 Pilot holes using the 5mm Drill Bit. If installing on a door, drill the top hole all the way through the door for the M5 Bolt. Only drill the bottom 3 Pilot Holes 25mm deep.

**5.** Place Screw Anchors into the drilled pilot holes. If you are installing on a door, do not put Screw Anchor into top hole, as this is for the M5 Bolt.

**6.** Place the Key Hook (if needed) inside it's respective hole (Fig.2). If you are not using the Keysafe cover, then stick the Gasket on the back of the Keysafe and poke holes in the pilot hole positions. If you are using the cover, do not put the Gasket on. Then, place the Keysafe on the surface once again, and screw in the Fixing Screws where there are screw Anchors.

**7.** If you are installing on a door, screw in the M5 Bolt through the top hole. Secure on the other side of the door with the Washer and Nut. (Fig.3)

## Shackle (737):

If you have the 737-BLK Shackle Keysafe, follow instructions below to setup hardware.

**1.** Ensure the Weather Cover is installed on the Keysafe, and ensure Shackle Plugs are installed on the Shackle. **Please Note:** IP54 Rating applies only when Weather Cover & Shackle Plugs are used.

**2.** While the Keysafe is still open, slide and hold open the sprung shackle toggle (Fig.4). Insert the Shackle through the top of the cover and into the Keysafe itself, then release the toggle to secure the shackle.

**3.** To remove shackle, slide and hold open the toggle, and pull shackle out. (Fig.4)

Fig.4



Fig.2

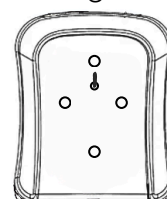
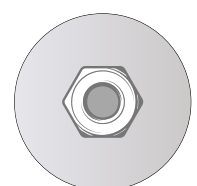


Fig.3



**8.** Now, turn back to page 1, and follow the instructions to finish the setup of your Keysafe.